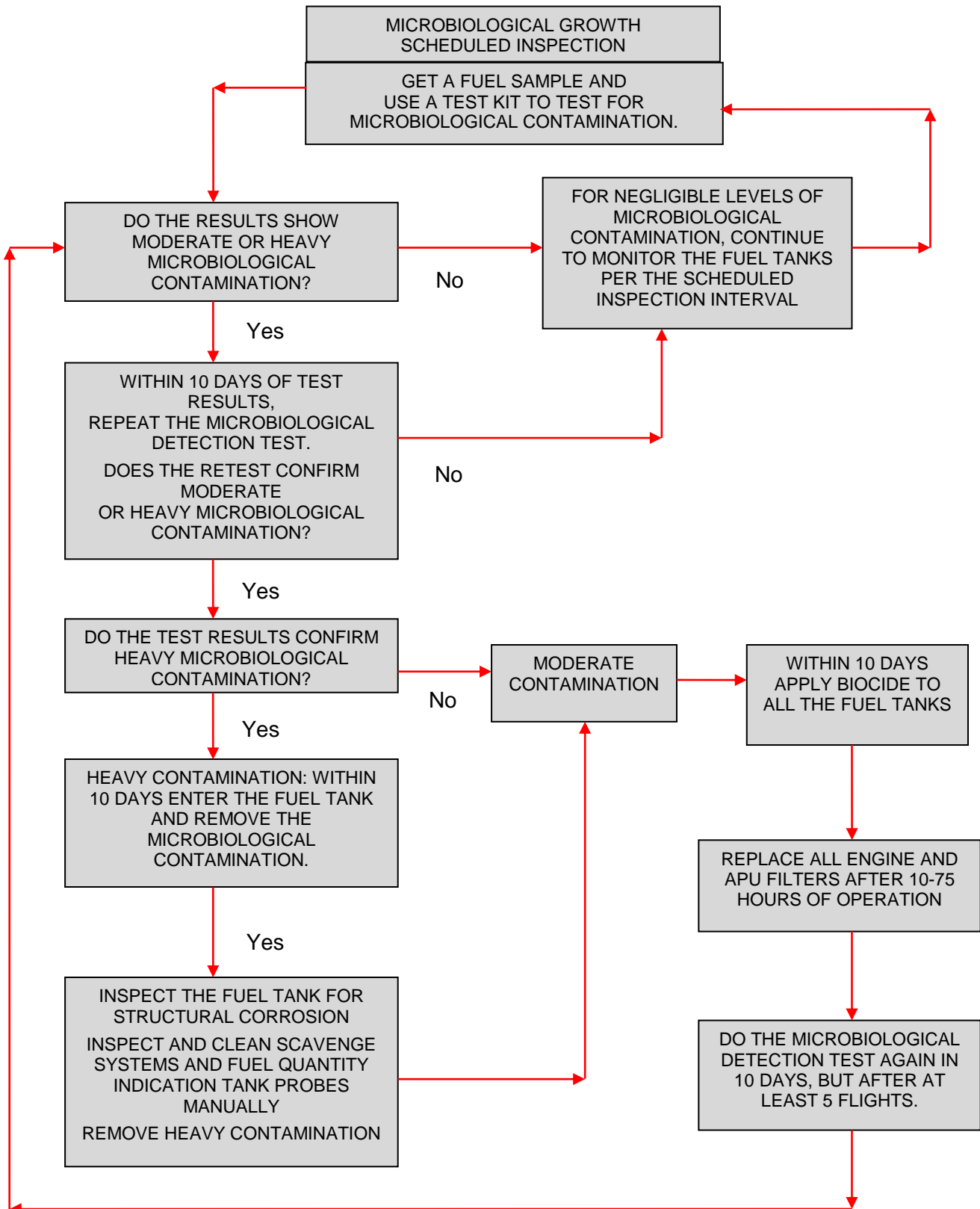


# Actions following testing using the FUELSTAT<sup>®</sup> *resinae* PLUS or FUELSTAT<sup>®</sup> *resinae* test kits

(Based on the IATA Guidelines, but we advise that each user should define their policy on test frequency and actions following a positive test result)



**NOTES:**

1. If the detection test shows microbial growth, then do the scheduled inspection test more often.
2. After a treatment with biocide, don't test again until you fly at least 5 flights. This is to make sure that fuel treatment with biocide is fully removed from the fuel tanks before the next test.
3. If the biocide treatment is not effective using 1/3 fuel load, use a biocide treatment with a full fuel load and use the maximum soak time. The contamination may be towards the top of the tank.